

## Duties

---

Two assistant referees may be appointed whose duties, subject to the decision of the referee, are to indicate:

- when the whole of the ball leaves the field of play
- which team is entitled to a corner kick, goal kick or throw-in
- when a player may be penalised for being in an offside position
- when a substitution is requested
- when misconduct or any other incident occurs out of the view of the referee
- when offences have been committed whenever the assistant referees have a better view than the referee (this includes, in certain circumstances, offences committed in the penalty area)
- whether, at penalty kicks, the goalkeeper moves off the goal line before the ball is kicked and if the ball crosses the line

## Assistance

---

The assistant referees also assist the referee to control the match in accordance with the Laws of the Game. In particular, they may enter the field of play to help control the 9.15 m (10 yds) distance.

In the event of undue interference or improper conduct, the referee will relieve an assistant referee of his duties and make a report to the appropriate authorities.

## Duties and responsibilities

---

The assistant referees help the referee to control the match in accordance with the Laws of the Game. They also assist the referee in all other matters involving the running of the match at the request and direction of the referee. This commonly includes such matters as:

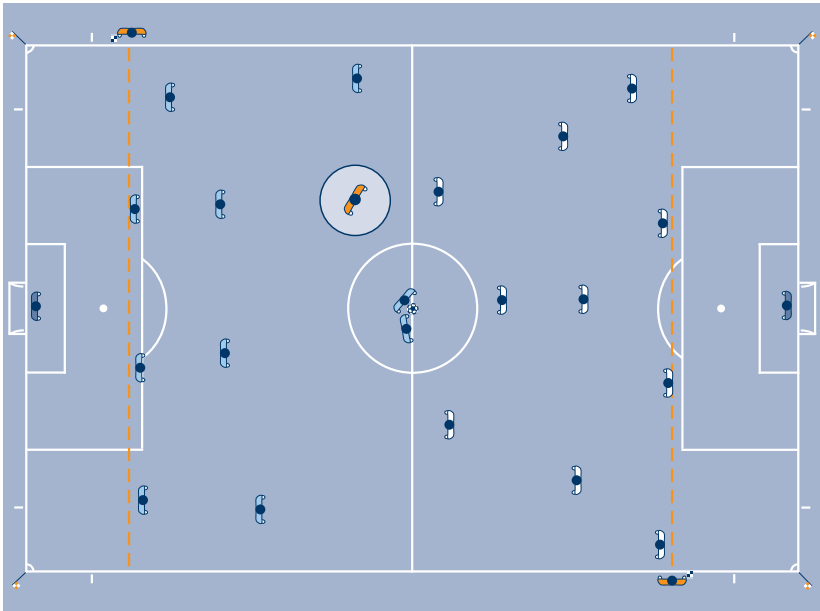
- inspecting the field, the balls used and players' equipment
- determining if problems with equipment or bleeding have been resolved
- monitoring the substitution procedure
- maintaining back-up records of time, goals and misconduct

## Positioning and team work

---

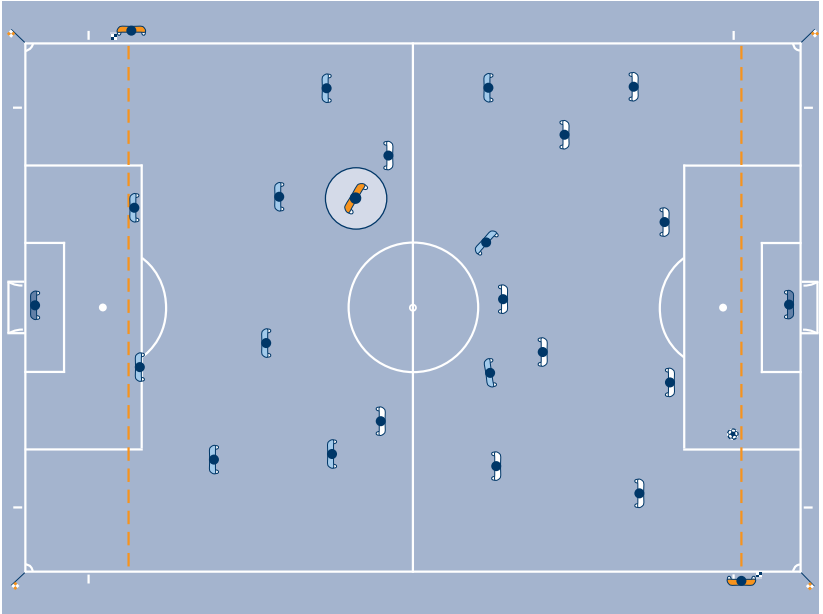
### 1. Kick-off

The assistant referees must be in line with the second-last opponent.



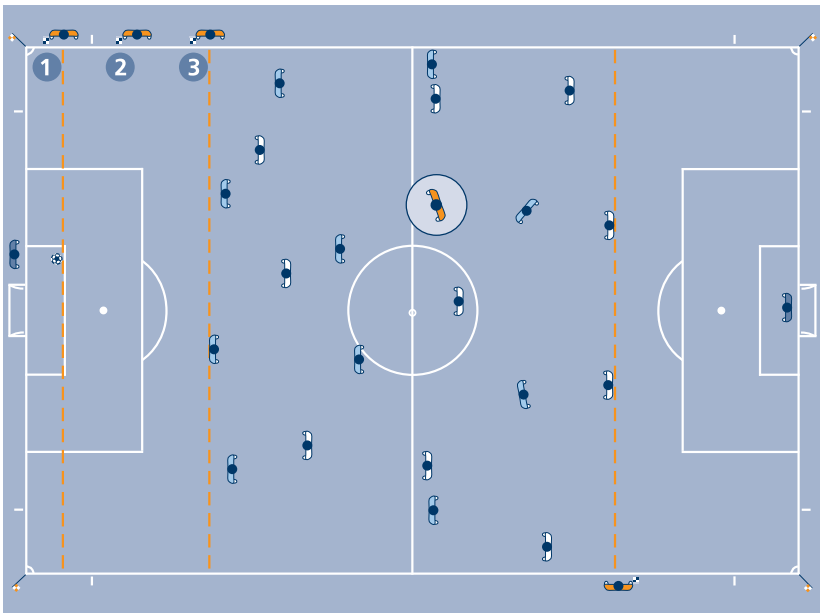
## 2. General positioning during the match

The assistant referees must be in line with the second-last opponent or the ball if it is nearer the goal line than the second-last opponent. The assistant referees must always face the field of play.



### 3. Goal kick

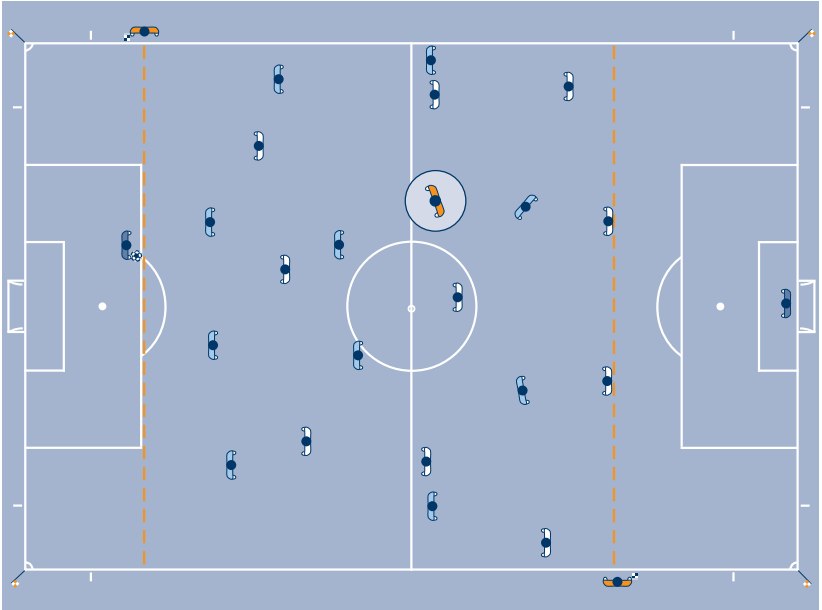
1. The assistant referees must check first if the ball is inside the goal area:
  - if the ball is not placed correctly, the assistant referee must not move from his position, make eye contact with the referee and raise his flag
2. Once the ball is placed correctly inside the goal area, the assistant referee must move to the edge of the penalty area to check that the ball leaves the penalty area (ball in play) and that the attackers are outside:
  - if the second-last opponent takes the goal kick, the assistant referee must move directly to the edge of the penalty area
3. Finally, the assistant referee must take a position to check the offside line, which is a priority in any case



#### 4. Goalkeeper releasing the ball

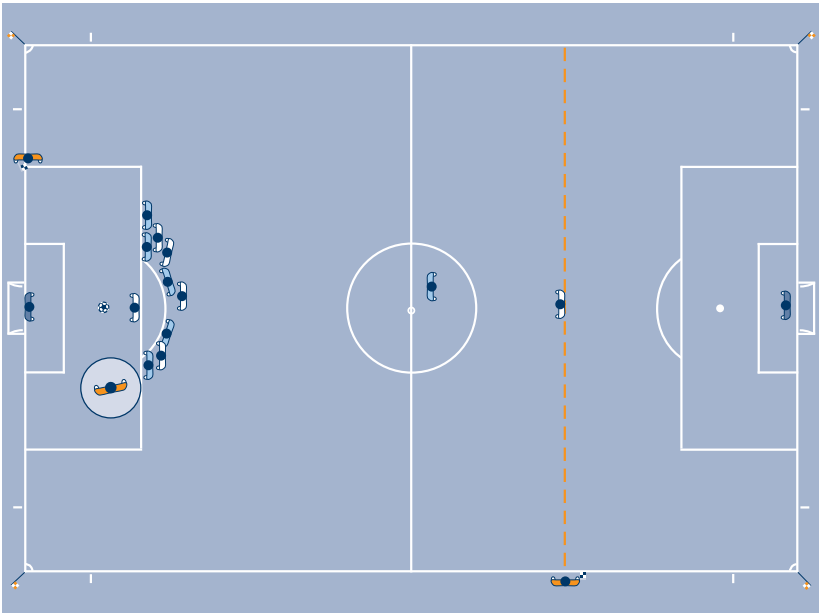
The assistant referees must take a position in line with the edge of the penalty area and check that the goalkeeper does not touch the ball with his hands outside the penalty area.

Once the goalkeeper has released the ball, the assistant referees must take a position to check the offside line, which is a priority in any case.



## 5. Penalty kick

The assistant referee must be positioned at the intersection of the goal line and the penalty area. If the goalkeeper blatantly moves off the goal line before the ball is kicked and a goal is not scored, the assistant referee must raise his flag.

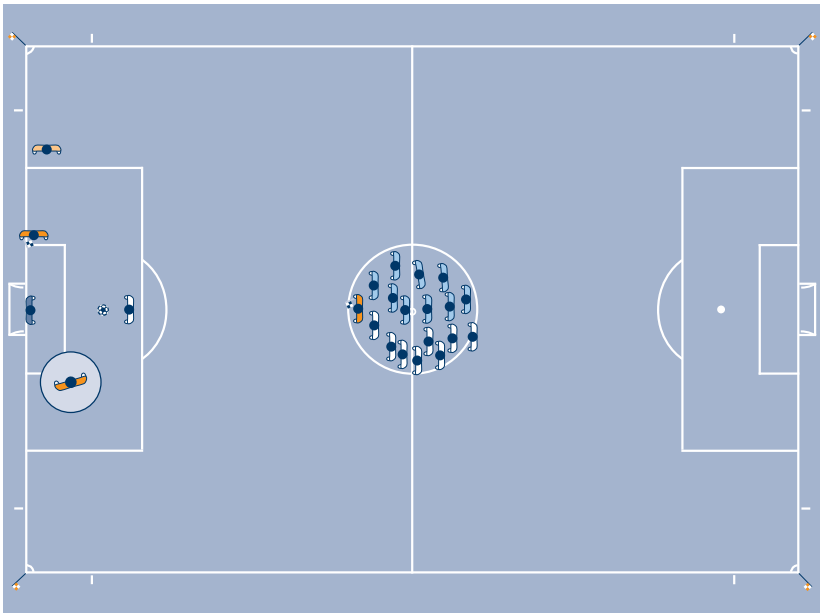


### 6. Kicks from the penalty mark

One assistant referee must be positioned at the intersection of the goal line and the goal area. His main duty is to check if the ball crosses the line:

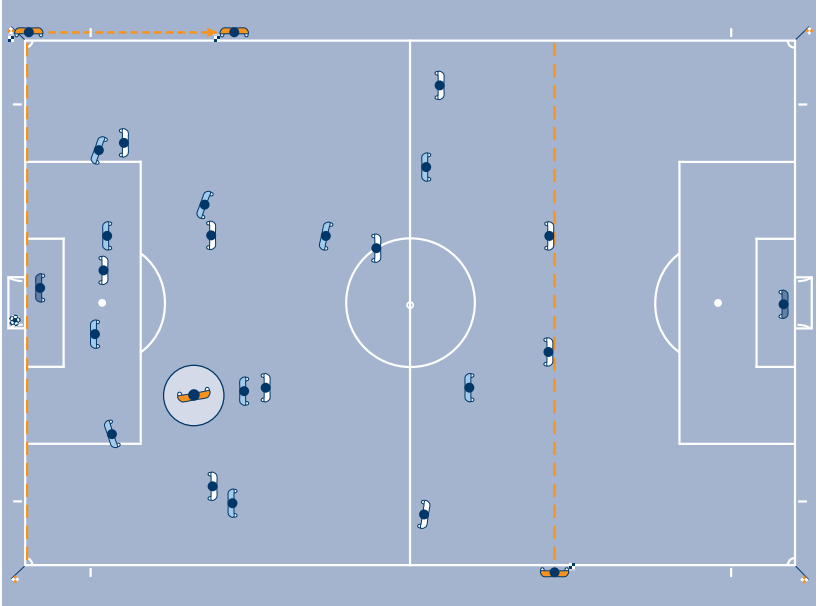
- when it is clear that the ball has crossed the goal line, the assistant referee must make eye contact with the referee without giving any additional signal
- when a goal has been scored but it is not clear whether the ball has crossed the line, the assistant referee must first raise his flag to attract the referee's attention and then confirm the goal

The other assistant referee must be situated in the centre circle to control the remaining players from both teams.

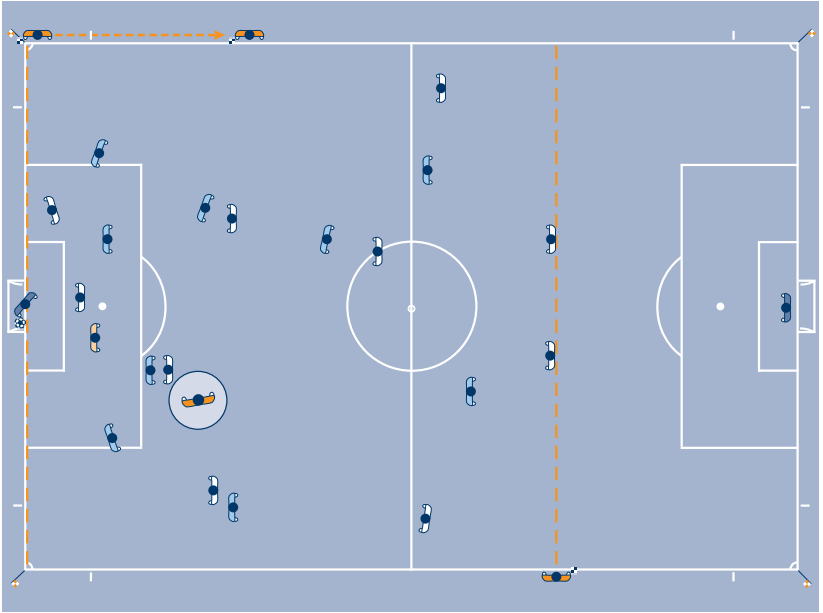


## 7. "Goal – No Goal" situations

When a goal has been scored and there is no doubt about the decision, the referee and assistant referee must make eye contact and the assistant referee must then run quickly 25-30 metres along the touch line towards the halfway line without raising his flag.



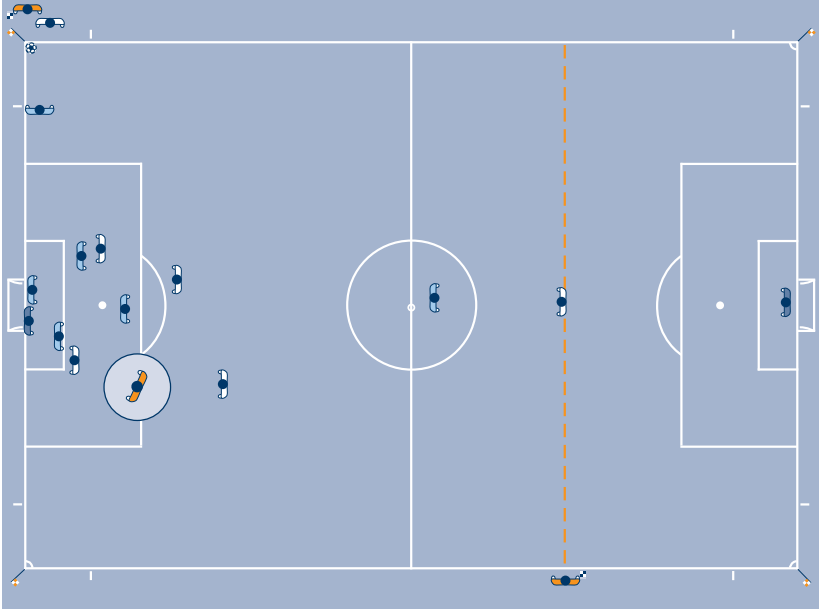
When a goal has been scored but the ball appears still to be in play, the assistant referee must first raise his flag to attract the referee’s attention then continue with the normal goal procedure of running quickly 25-30 metres along the touch line towards the halfway line.



On occasions when the whole of the ball does not cross the goal line and play continues as normal because a goal has not been scored, the referee must make eye contact with the assistant referee and if necessary give a discreet hand signal.

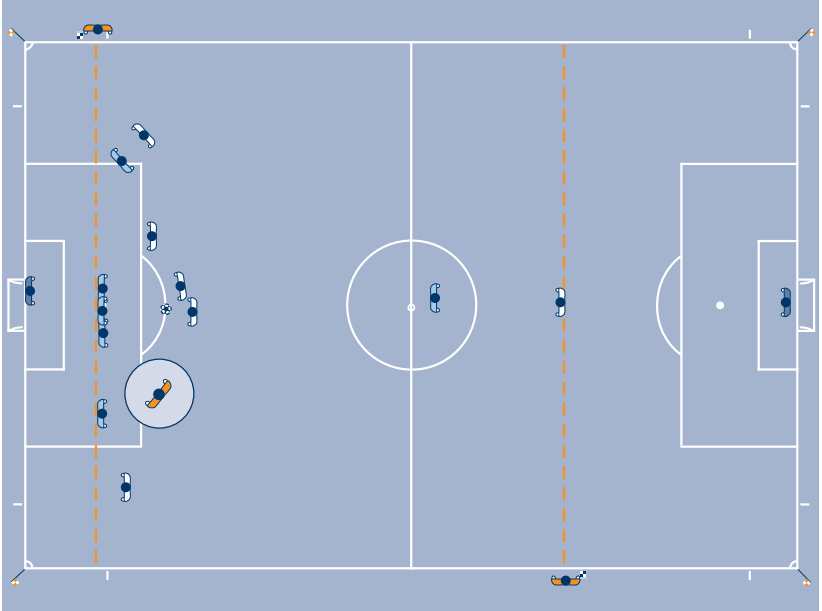
## 8. Corner kick

The assistant referee's position for a corner kick is behind the corner flag in line with the goal line. In this position he must not interfere with the player taking the corner kick. He must check that the ball is properly placed inside the corner arc.



### 9. Free kick

The assistant referee's position for a free kick must be in line with the second-last opponent in order to check the offside line which is a priority in any case. However, he must be ready to follow the ball by moving down the touch line towards the corner flag if there is a direct shot on goal.



## **Gestures**

---

As a general rule, the assistant referee must give no obvious hand signals. However, in some instances, a discreet hand signal may give valuable support to the referee. The hand signal should have a clear meaning. The meaning should have been discussed and agreed upon in the pre-match discussion.

## **Running technique**

---

As a general rule, the assistant referee should face the pitch whilst running. Side-to-side movement should be used for short distances. This is especially important when judging offside and gives the assistant referee a better line of vision.

## **Signal beep**

---

Referees are reminded that the signal beep system is an additional signal to be used only when necessary in order to gain the attention of the referee.

Situations when the signal beep is useful include:

- offside
- fouls (outside the view of the referee)
- throw-in, corner kick or goal kick (tight decisions)
- goal situations (tight decisions)



**Substitution**



**Throw-in  
for attacker**



**Throw-in  
for defender**



**Goal kick**



**Corner kick**



**Offside**



**Offside on the  
near side of the field**



**Offside in the centre  
of the field**



**Offside on  
the far side of the field**



**Foul by defender**



**Foul by attacker**



## Flag technique and team work

---

The assistant referee's flag must always be visible to the referee, unfurled and still whilst running.

When making a signal, the assistant referee must stop running, face the field of play, make eye contact with the referee and raise the flag with deliberate (not hasty or exaggerated) motions. The flag should be like an extension of the arm.

The assistant referees must raise the flag using the hand that will also be used for the next signal in a sequence. If circumstances change and the other hand must be used for the next signal, the assistant referee should move his flag to the opposite hand below the waist.

Whenever the assistant referee signals that the ball is out of play, he must continue to signal until the referee acknowledges it.

Whenever the assistant referee signals for violent conduct and the signal is not seen immediately:

- if play has been stopped for disciplinary action to be taken, the restart must be in accordance with the Laws (free kick, penalty kick etc.)
- if play has already restarted, the referee may still take disciplinary action but not penalise the offence with a free kick or penalty kick