

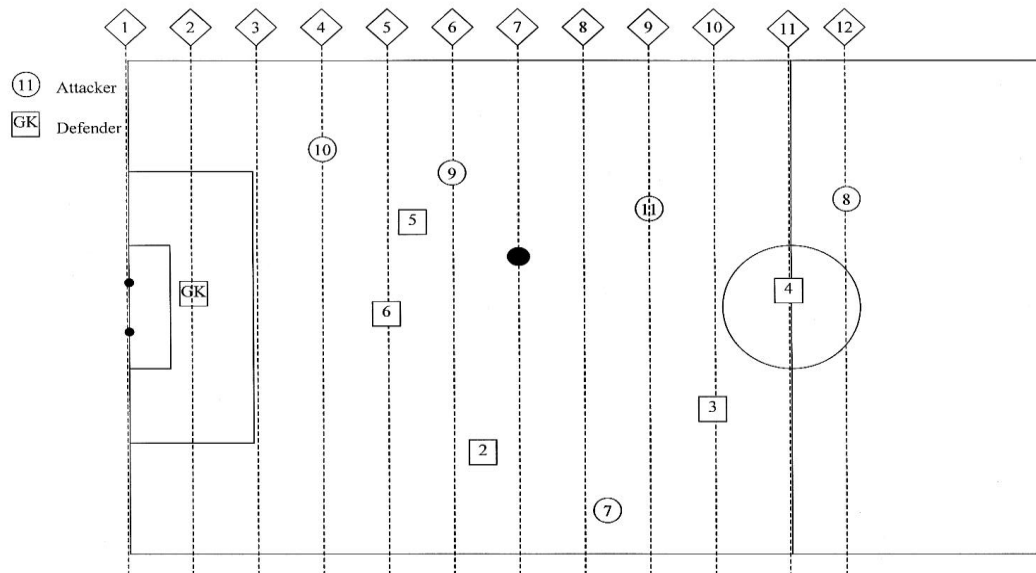
Assistant Referee Positioning

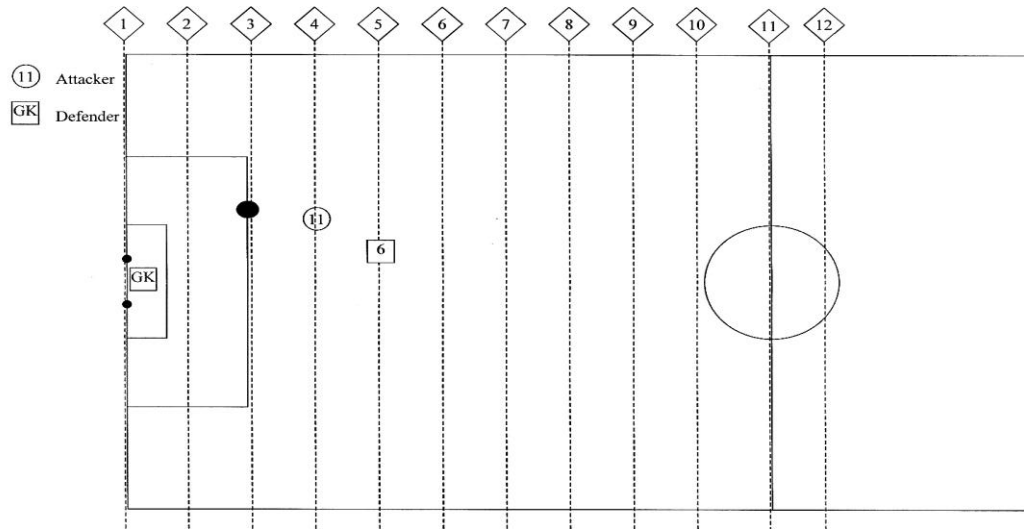
The Circles with numbers in them are attackers

The Squares are defenders

The solid black circle is the ball.

The diamonds with numbers are the possible positions that the Assistant Referee could take. Remember that the AR will line up with the 2nd last defender, the ball or the halfway line, whichever is closer to the goal line the AR is covering.

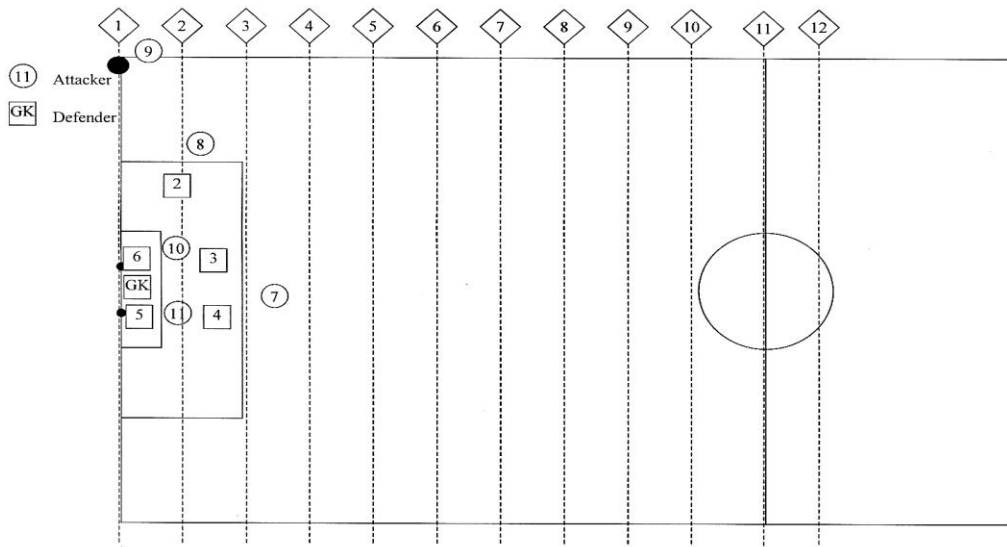




COYSA

Assistant Referee Positioning

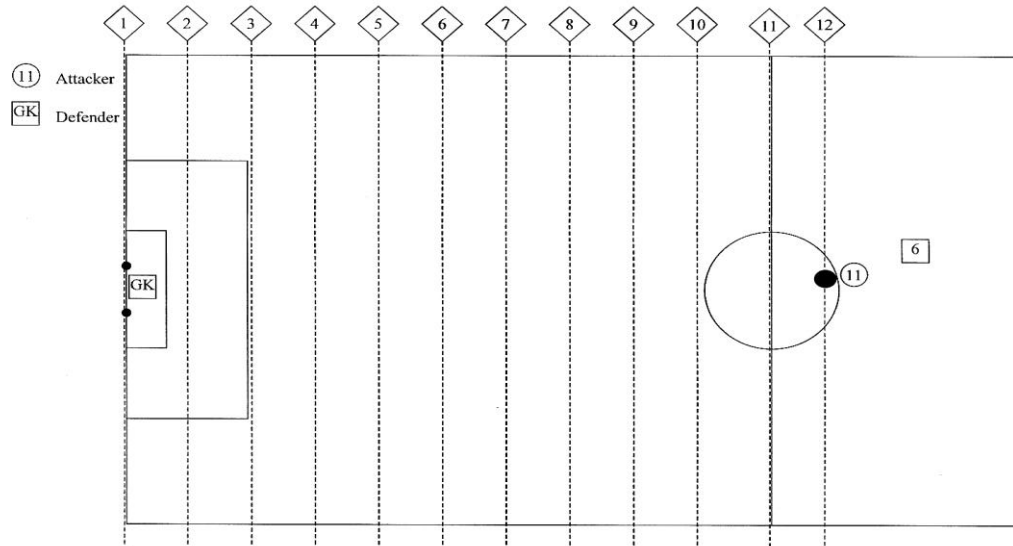
8



COYSA

Assistant Referee Positioning

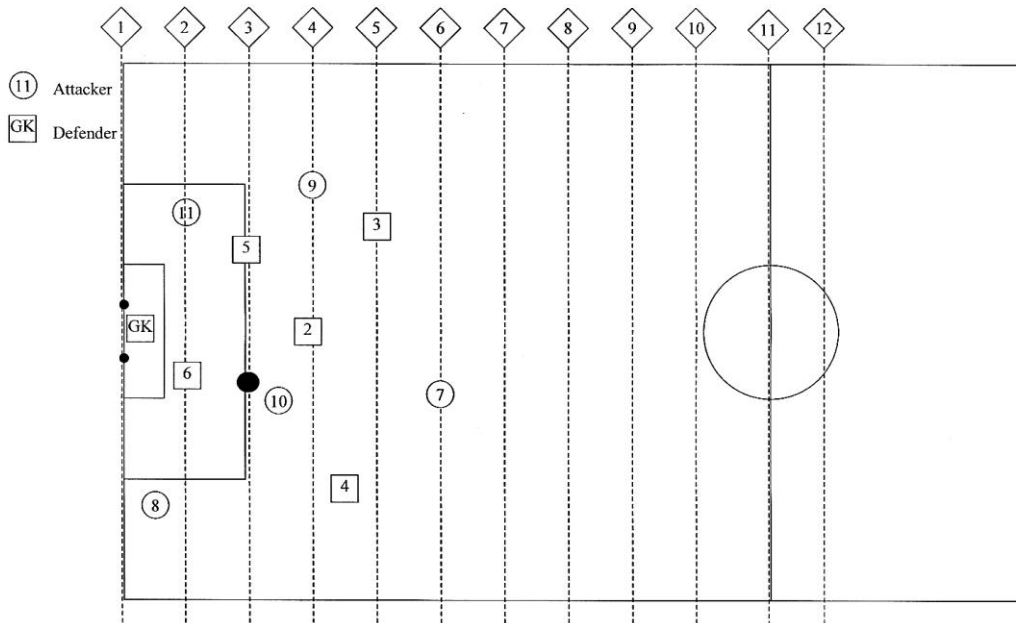
6



COYSA

Assistant Referee Positioning

10



COYSA

Assistant Referee Positioning

9